

KDE Integration on a BSD Platform

Kris Moore
PC-BSD / iXsystems

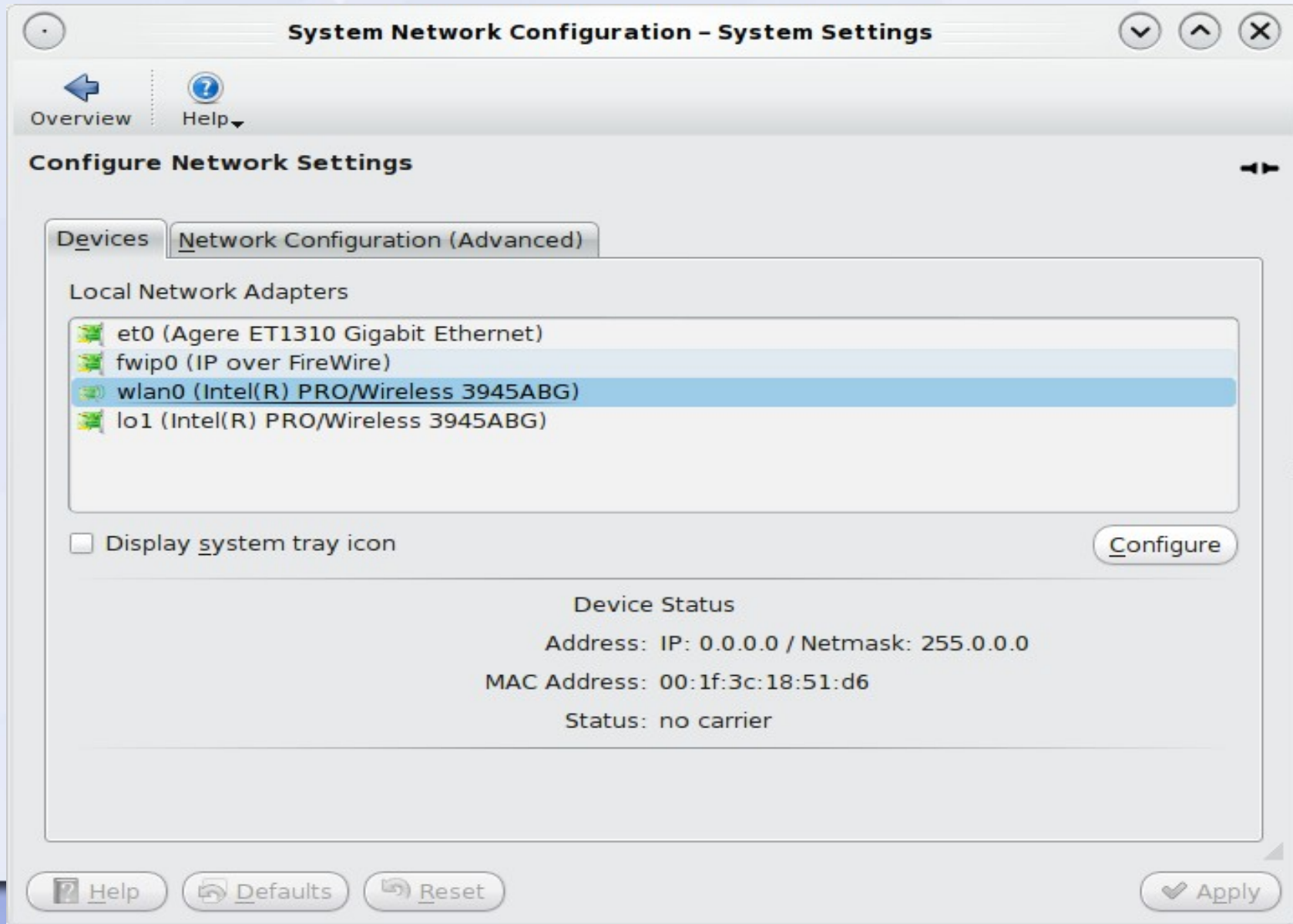
Who am I?

What is PC-BSD?

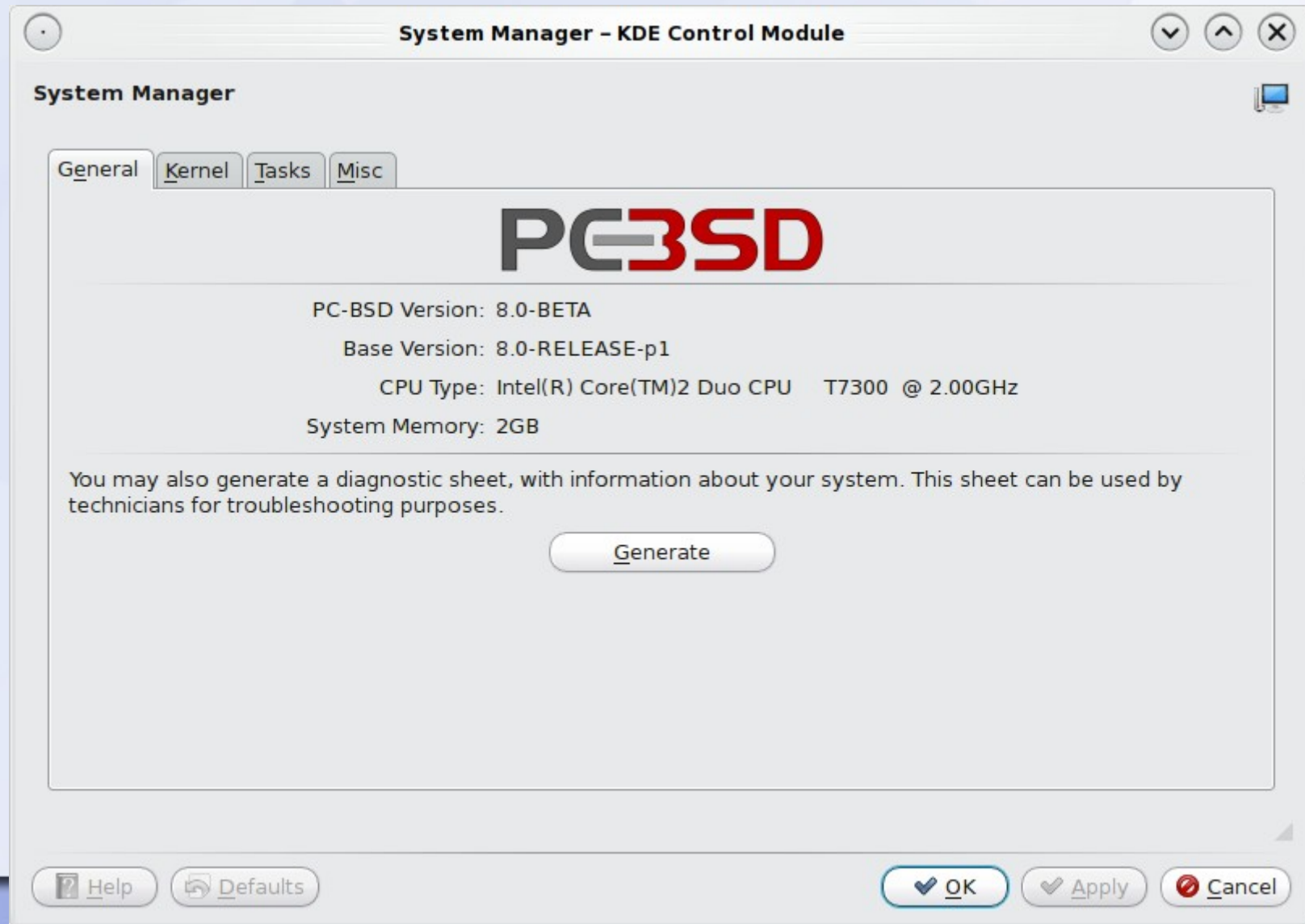
How PC-BSD integrates KDE 4

- Standardizes on KDE4 as the main desktop / WM
- Custom tools written in QT4, tailored for KDE
- Uses custom package management system, with KDE enhancements

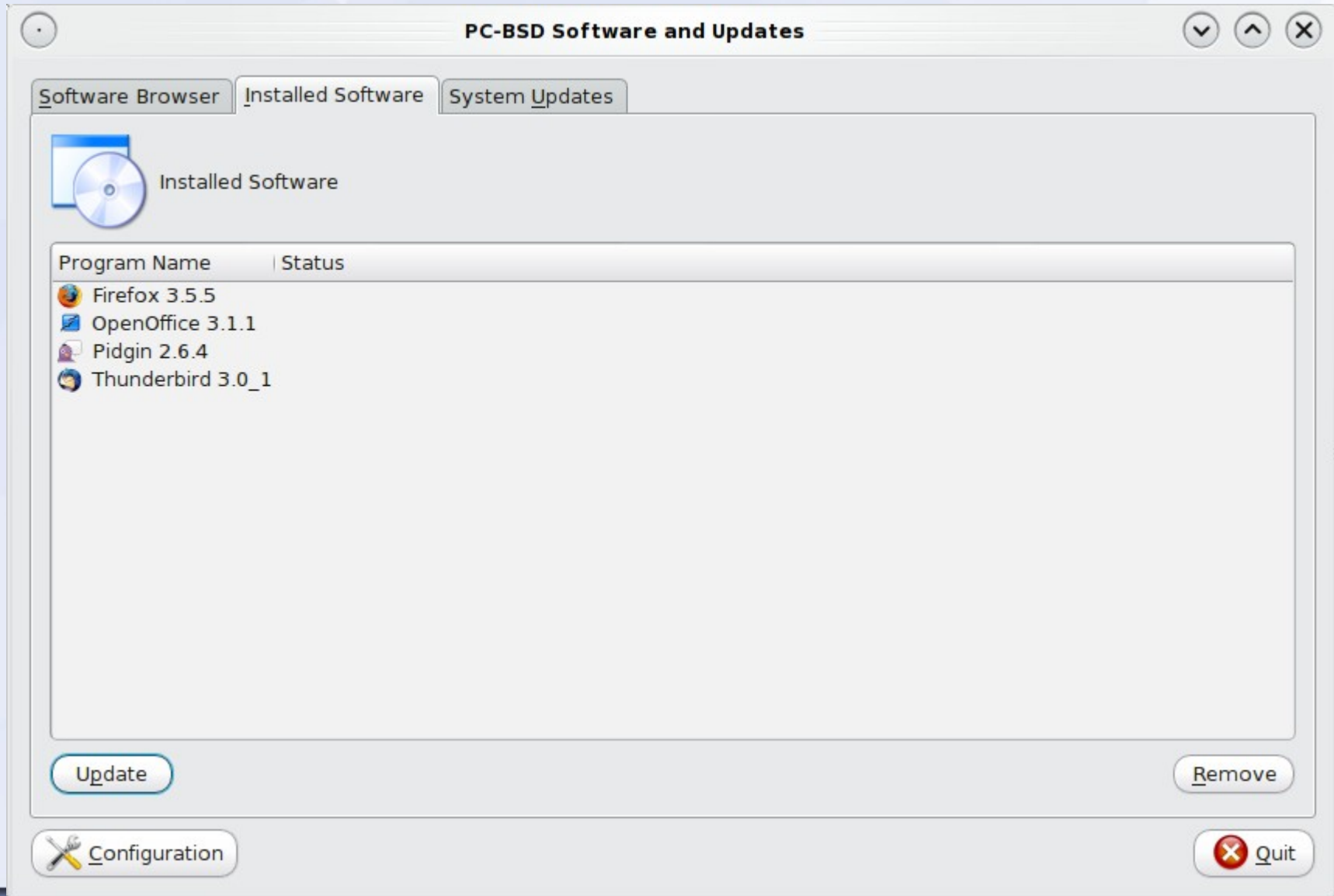
Network Manager



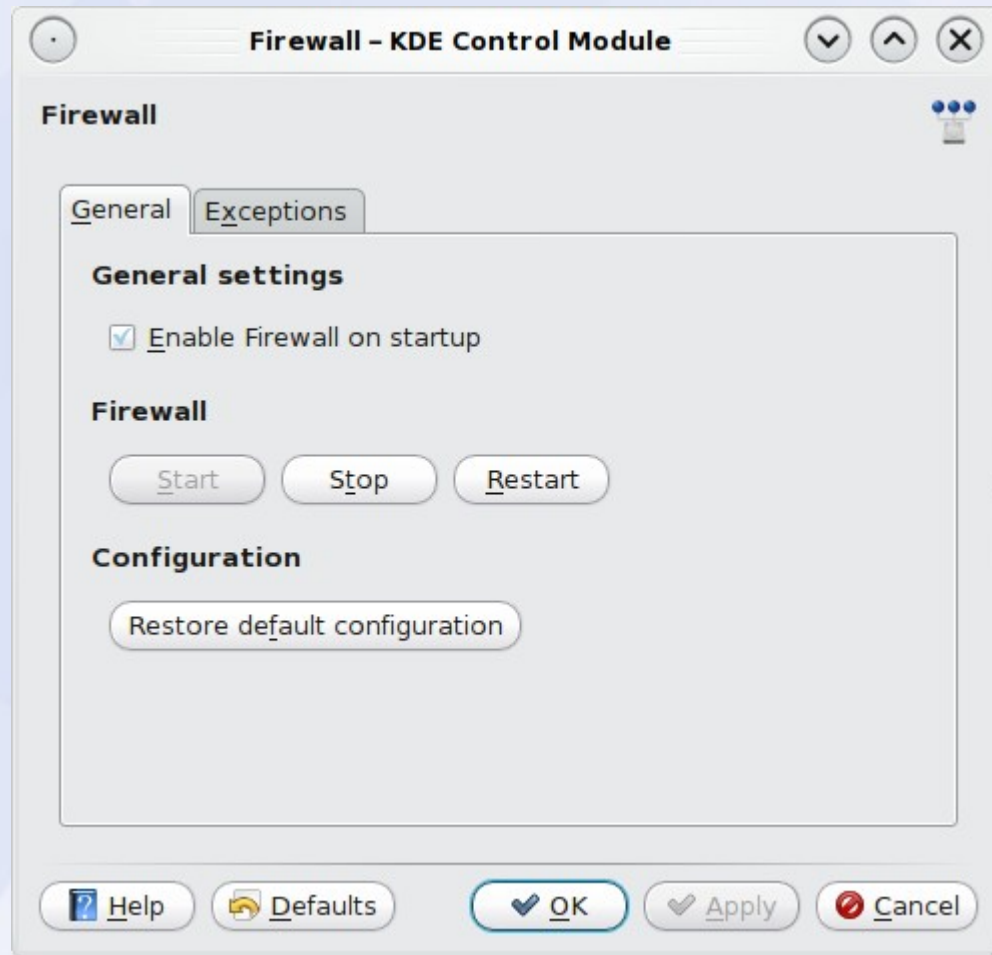
System Manager



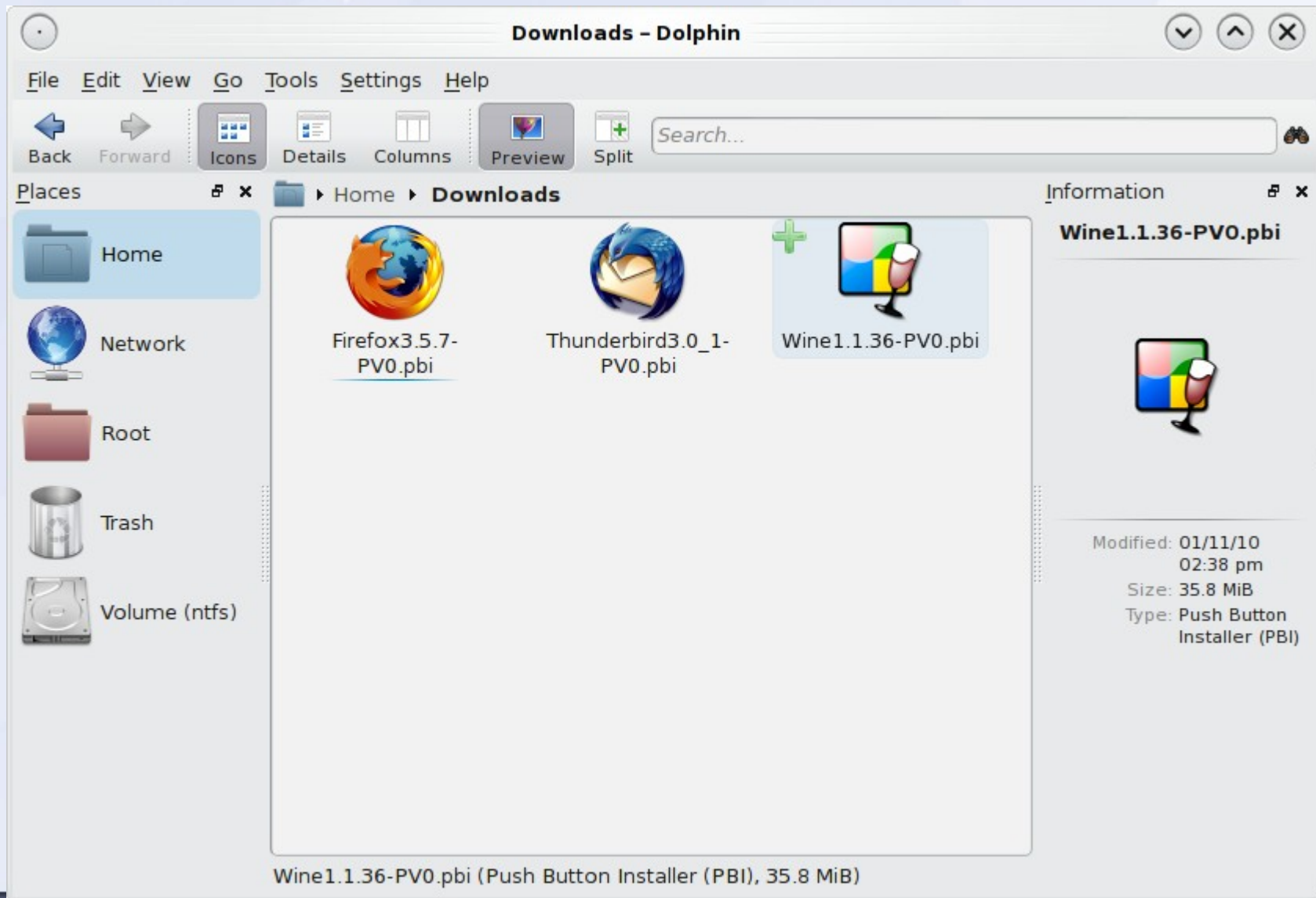
Software Manager



Firewall Configuration



PBI Thumbnail Generator



PBI Package Management

- Self-contained binary installers (PBI)
- Package contains all dependencies
- Integrates with KDE menus, registers mime-types, desktop icons, etc
- Works with custom thumbnail library

What we love about KDE on PC-BSD :-)

- Look & Feel of a professional desktop
- Built (mostly) around QT
- Complete UI makes desktop transition easier
- Flexibility for branding / theming
- Constantly improving / innovating

What we don't love about KDE on PC-BSD :-)

- Getting away from a pure QT implementation
- Linux'isms – Makes porting difficult
- Package Management with KDE4-based apps in a self-contained manner

Questions?